

INVITED REVIEW

Mesenchymal Stromal Cells: Past, Present, and Future

Nakia D. Spencer¹, BS, MS, Jeffrey M. Gimble², MD, PhD, and Mandi J. Lopez¹, DVM, MS, PhD, Diplomate ACVS

¹Laboratory for Equine and Comparative Orthopedic Research, Louisiana State University, School of Veterinary Medicine, Veterinary Clinical Sciences, Baton Rouge, LA and ²Stem Cell Biology Laboratory, Pennington Biomedical Research Center, Baton Rouge, LA

Corresponding Author

Mandi J. Lopez, DVM, MS, PhD, Diplomate ACVS, Laboratory for Equine and Comparative Orthopedic Research, Louisiana State University, School of Veterinary Medicine, Veterinary Clinical Sciences, Skip Bertman Drive, Baton Rouge, LA 70803
E-mail: mlopez@vetmed.lsu.edu

Submitted September 2009

Accepted April 2010

DOI:10.1111/j.1532-950X.2010.00776.x

Adult mesenchymal stromal cells are plastic-adherent cells that are self-renewing and have the capacity to differentiate into various tissue specific lineages. Stromal cells were initially discovered over 100 years ago and substantial insight into stromal cell identification, isolation, characterization, and differentiation has been made, including efforts to elucidate the factors involved in stromal cell differentiation. Stromal cells have immune privilege and thus are attractive candidates for tissue engineering and regenerative medicine applications. Positive results from a number of recent investigations support the use of adult mesenchymal stromal cells for clinical application. This review article provides a brief overview of past, present, and future stromal cell technology.

For stem cell technology, recent investigative focus has been on therapeutic and regenerative stem cell applications. Whereas stem cell applications appear to have substantial promise based on experimental results, studies to confirm repeatability and safety are necessary to support transition from basic research to clinical application. Adult mesenchymal stem cells are undifferentiated cells that are capable of self-renewal and are responsible for adult tissue regeneration.¹ They have the potential to generate various tissue cells *in vitro* and respond *in vivo* to biochemical and mechanical stimuli alone or in combination.²⁻⁴ Stem cells have 3 principal characteristics: (1) they are capable of self-renewal, (2) are unspecialized cells, and (3) can give rise to other specialized cell types. Mesenchymal stromal cells (MSC) are cells derived from mesenchymal tissues and they adhere to plastic. These cells are isolated from various tissues including adipose tissue and bone marrow and can differentiate into various tissue lineages (Fig 1).^{4,5} There is considerable controversy over whether cells derived from adult tissues are stem cells or stromal cells. For purposes of this review, the acronym MSC refers to mesenchymal stromal cells based upon the current nomenclature guidelines presented below.

STEM CELL HIERARCHY

Stem cells have varying degrees of differentiation potential, which can be described with a hierarchical model (Fig 2).⁶

The work was performed at Louisiana State University, Baton Rouge, LA in the Laboratory for Equine and Comparative Orthopedic Research.

The fertilized oocyte or zygote is at the base of the model. Zygotes are totipotent because they have the ability to form all tissues, the embryo itself as well as the placental trophoblasts. Embryonic stem (ES) cells are the next level and are pluripotent cells because they can differentiate into almost any type of cell that arises from the 3 germ layers. Next, are induced pluripotent stem (iPS) cells. These are adult somatic cells induced to express pluripotent genes.⁷ The next level are multipotent cells such as bone marrow-derived stromal cells (BMSC) and adipose tissue-derived stromal cells (ASC). These cells are diversely distributed and have been found and isolated from various tissues including bone marrow, adipose tissue, muscle, liver, brain, umbilical cord blood, Wharton's jelly from the umbilical cord, placenta, peripheral blood, and pancreas.⁸⁻¹⁶ These cells are capable of differentiating into diverse lineages such as cartilage, muscle, and neuronal-like cells.^{15,17} At the apex of the hierarchy are unipotent cells that are only capable of producing their own cell type.¹⁸ Glial cells are an example of unipotent cells.

To circumvent the use of controversial ES cells, efforts are underway to identify comparable alternatives. The recently described iPS cells may represent a promising option. Initially reported in 2007, iPS cells are generated by transfecting adult somatic cells with the pluripotent transcription factors; Oct3/4, c-Myc, Sox-2, and Klf4.⁷ Takahashi et al⁷ reported that human iPS cells were identical to ES cells in morphology, proliferation, gene expression, *in vitro* differentiation, and teratoma formation. Potential iPS cell therapies have been reported. In a humanized transgenic mouse model of sickle cell anemia¹⁹ treatment with iPS hematopoietic cells significantly improved all

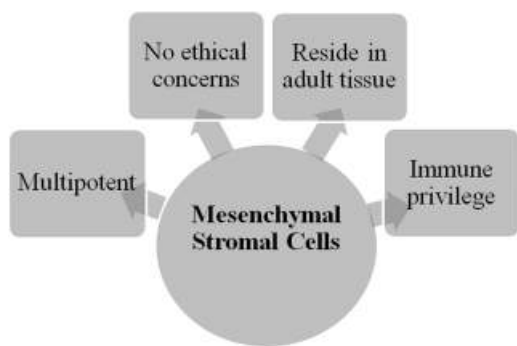


Figure 1 Characteristics of mesenchymal stromal cells. Schematic illustration of mesenchymal stromal cell characteristics.

hematologic and systemic signs of sickle cell anemia in the mice. Human iPS cells differentiated into pigmented retina epithelium facilitated short-term maintenance of photoreceptors in a murine dystrophic retina model.²⁰ Long-term visual function was maintained in the model despite eventual loss of the xenograft cells. Although additional studies are needed to obviate the use of viruses to generate iPS cells, the potential of iPS cells is relatively untapped.

ADULT STEM CELLS/STROMAL CELLS

The discovery of stromal cells dates to the 19th century studies of Julius Friedrich Cohnheim, but most work with stromal cells has occurred over the past few decades.^{21,22} Bone marrow stromal cells were first isolated and described in studies by Alexander Friedenstein in the late 1960s.²³ In 1970, Friedenstein isolated bone marrow-derived fibroblast-like cells based on their adherence to plastic.²⁴ Additional studies by Friedenstein^{25,26} and Owen^{26,27} demonstrated the osteogenic and adipogenic potential of stromal cells from

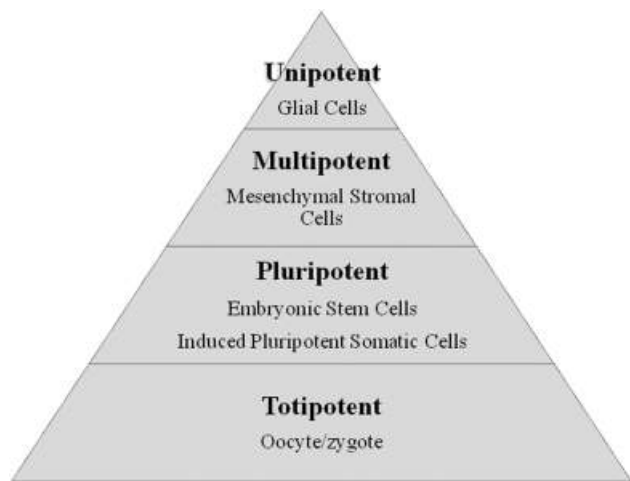


Figure 2 Stem cell differentiation potential. Stem cells have varying degrees of differentiation potential illustrated here as a hierarchy.

bone marrow. Friedenstein also found that guinea pig and rabbit thymus cells could be induced to differentiate into bone by transitional epithelium and decalcified bone matrix, respectively.²⁸ Marshall Urist showed that demineralized bone or its extracts induced differentiation of mesenchymal-type perivascular cells into cartilage and bone formation when implanted into subcutaneous or intramuscular sites in humans and animal models.^{29,30} Similar work was performed independently by Reddi and Huggins.³¹ This combined work confirmed the existence of multipotent progenitor cells.

Caplan and colleagues reported the dissociation of embryonic stage 24 chick limb bud mesenchymal progenitor cells and their subsequent differentiation into bone, cartilage, muscle, and other mesenchymal tissues in the 1970s.³²⁻³⁴ During the early 1980s, Caplan and colleagues discovered that demineralized adult bone contains chemotactic factors that stimulate mesenchymal cells to undergo de novo endochondral ossification. They used in vitro assays with embryonic chick limb bud mesenchymal cells to detect bioactive molecules from demineralized bone matrix.³⁵⁻⁴¹ They established that the chondrogenic-stimulating activity of demineralized bone was mediated by a 31 kDa protein now known as a heterodimer of bone morphogenic proteins (BMPs).² Additional work in the 1980s further validated their findings when cells from bone marrow were used experimentally to accelerate spinal fusion and repair large bone defects in human models.⁴² Independent lines of investigation led to the isolation of multiple stromal cell lines capable of supporting the growth and differentiation of hematopoietic stem cells (HSC). Most of the “nurse” cells proved to be multipotent, with the ability to differentiate along adipogenic and osteogenic lineages.⁴³ The conclusion from these studies was that bone marrow contains a population of cells that contributes to repair of bone defects. These landmark investigations launched the foundation for stromal cell research.

NOMENCLATURE

Stem cell nomenclature has changed several times since its introduction. Caplan⁴⁴ popularized the term mesenchymal stem cell in the early 1990s but some investigators have since chosen to omit the stem cell reference when publishing preclinical^{45,46} or clinical⁴⁷⁻⁴⁹ studies using MSC. During the 2000 Annual Meeting of the International Society for Cellular Therapy (ISCT), the Mesenchymal and Tissue Stem Cell Committee concluded that there was inadequate evidence to support the stemness of unfractionated plastic-adhering cells and sought to clarify and standardize the nomenclature related to continued use of the MSC acronym.⁵⁰ It was proposed that plastic-adherent cells currently described as MSC be called multipotent MSC.⁵ Further, the term mesenchymal stem cell should be used only for cells that demonstrate stem cell activity by standardized criteria (listed below under “Stromal cell characterization”);

however, the acronym MSC can be used for either cell type as long as the meaning is clearly defined.

The ISCT reasoning for standardizing terminology is first, to maintain continuity in scientific literature to minimize confusion. Second, it has been demonstrated that the plastic-adherent marrow cells represent a heterogeneous population. There is currently insufficient data to support that unfractionated plastic-adherent marrow cells are stem cells, hence, the Committee recommended that the term multipotent MSC be used for those cells. Third, it is necessary to maintain a uniform consensus between biomedical disciplines. Fourth, current studies suggest that the cells originate from mesenchymal tissue and terminology should designate the cell origin. Lastly, the cells are found within the stromal compartments of native tissue. Thus, the Committee considered that the unfractionated cell population should be termed stromal cells regardless of the tissue source to avoid reference to biologic or therapeutic potential.

MSC are referred to by their tissue of origin. Diverse terminology has been used for stromal cells isolated from bone marrow and adipose tissue. Bone marrow cells are referred to as bone marrow stromal stem cells,⁵¹ marrow stromal cells,⁵² and marrow-isolated adult multipotent inducible cells.⁵³ Commonly used terms for cells derived from adipose tissue include ASC, adipose-derived adult stem cell,⁵⁴ adipose stem cell, adipose stromal cell, adipose mesenchymal stem cell, and preadipocyte, among others.^{55,56} The term adipose-derived stem cell or ASC was recommended for plastic adherent cells isolated from adipose tissue at the 2004 Second Annual International Fat Applied Technology Society meeting.⁵⁶

STROMAL CELL CHARACTERIZATION

Work to characterize stromal cells dates back over 30 years. To identify MSCs *in vitro*, cells must have 3 specific characteristics.^{21,55,57,58} The first characteristic is the ability of cultured MSC to readily adhere to plastic culture dishes and form fibroblast-like colonies,⁵⁹ hence the term colony forming unit-fibroblastic is applied to cultured MSC that are not induced into specific lineages.^{59,60} Immunohistochemical analysis of fibroblast-like cells show positive staining for alkaline phosphatase, collagen III, and fibronectin.⁵⁹ The second characteristic is that the cells have the capacity to differentiate into various specialized cell lineages. MSC have been induced into adipogenic, chondrogenic, osteogenic, myogenic, and neurogenic-like lineages among others (Fig 3).^{15,17,61} The third characteristic is expression of defined cell surface marker profiles. Cluster of differentiation (CD)⁶² is a nomenclature system used to aid in the identification and classification of cell surface markers (surface antigens). Surface antigens allow for rapid identification of a cell population.²¹ Cell surface markers on cultured MSC have been identified using immunohistochemistry and flow cytometry. The ISCT proposed that specific markers must be expressed to identify MSC.²¹ The required positively expressed markers are CD73, CD90, and CD105. The cells

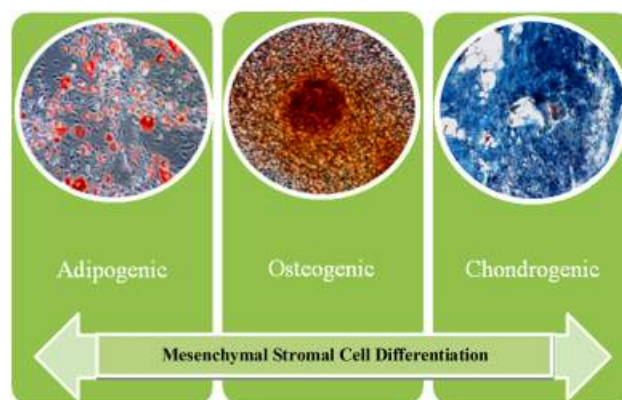


Figure 3 Photomicrographs of mesenchymal stromal cell differentiation. Mesenchymal stromal cells can be induced into adipogenic, osteogenic, and chondrogenic lineages, among others. (A) Canine adipose-derived stromal cell (ASC) adipogenesis. Lipid droplets are stained with Oil Red O. (B) Canine bone marrow-derived stromal cell (BMSC) osteogenesis. A bone nodule is stained with Alizarin Red. (C) Canine ASC chondrogenesis. Collagen fibers are evident in a chondrogenic pellet stained with Masson's Trichrome.

lack the markers CD11b and CD14 (monocytes and macrophages), CD34 (primitive HSCs and endothelial cells), CD45 (pan-leukocytes), CD79 α or CD19 (B cells), and HLA-DR. Cultured MSCs are also identified by a number of other surface markers including positive expression of CD13, CD29, CD144, CD166, and HLA-ABC and lack of expression of CD3 (T-cell receptor complex component), CD31 (neutrophil removal), CD117 (HSCs), and CD62L (leukocytes).⁶³⁻⁷²

Cell surface marker expression can vary because of different isolation techniques and as a function of culture time.^{73,74} There is also variation associated with species, cell origin (embryonic or adult), and site of origin. Zuk et al⁷⁵ demonstrated that cell surface markers differ between ASC and BMSC. ASC were positive for CD49d ($\alpha 4$ integrin) and vascular cell adhesion molecule or CD106, and there was no CD49d expression on BMSC. Pericytic markers like CD146 (Muc18) have been identified on the surface of ASC and BMSC with flow cytometry.^{65,76-78} To date, no single marker or set of markers has been determined to permit the unequivocal isolation and purification of MSC.⁴

Extensive research has been dedicated to isolation and phenotypic characterization of MSC in a number of species including cattle⁷⁹; dogs^{80,81}; horses⁸²; cats⁸³; people¹⁵; non-human primates⁸⁴; mice⁸⁵ and rats.⁸⁶ Primary BMSC have a heterogeneous morphologic phenotype of spindle-shaped cells and distinct colonies. After expansion, the phenotype becomes a homogenous population of spindle-shaped cells. Several species have morphologic differences between ASC and BMSC. Canine and equine ASC and BMSC share some similar morphologic phenotypes, but there are differences among cell passages.^{87,88} Morphologically, primary ASC form a more homogeneous spindle-shaped population of cells. This homogenous spindle-shaped morphology is

retained through expansion. Efforts to characterize the morphologic and cytochemical properties of MSCs are ongoing.

IMMUNOGENICITY OF ADULT STROMAL CELLS

Adult stromal cells are an alternative to ES cells because they are ethically and socially acceptable and have immune privilege. The immunosuppressive profiles of ASC and BMSC are well described.^{89–93} BMSC are immune privileged or even immunosuppressive.^{94,95} Le Blanc et al⁹⁵ conducted extensive research on human MSC immunologic properties, and one of their first studies was to determine the effect of MSC on lymphocyte proliferation in mixed lymphocyte culture (MLC). Cell proliferation was suppressed after the addition of 10,000–40,000 MSC, but low cell doses stimulated lymphocyte proliferation. In another study, osteogenic, adipogenic, and chondrogenic differentiated MSC had no lymphocyte alloreactivity and had greatest inhibition in MLC after osteogenic differentiation.⁹⁴ Based on these investigations, it appears that differentiated and undifferentiated MSCs do not elicit alloreactive lymphocyte proliferative responses and, in fact, modulate immune responses.

Analysis of MHC II molecules and costimulatory molecules showed that ASC have a low immunogenic profile after extended culture time.^{90–92} Lopez et al⁹⁶ evaluated the use of allogeneic (different individuals but same species) and syngeneic (genetically identical) ASC in a rat spinal fusion model. Adult rat adipose-derived stem cells loaded onto bioabsorbable scaffolds were implanted to promote lumbar spinal fusion.⁹⁶ There was no difference between allogeneic and syngeneic ASCs to promote spinal fusion, and both were superior to scaffold alone. A parallel immune study showed that there was a noncytotoxic humoral response to fetal bovine serum and no T-cell response to allogeneic or syngeneic ASC.⁹⁷ The results from these studies highlight the use of allogeneic and syngeneic adult stromal cells on biocompatible scaffolds for therapeutic or regenerative purposes and also further confirm the immune privilege of MSCs. Moreover, the immunosuppressive properties of MSC may potentially reduce the incidence of graft-versus-host disease after allogeneic transplantation.

STROMAL CELL MICROENVIRONMENT

Specific cellular and matrix interactions are necessary for stromal cells to proliferate and differentiate.⁴ The concept of a stromal cell niche (microenvironment) introduced by Schofield in 1978 and expanded upon by Weiss, Kincade, Weismann, and others has gained wide support.^{67,98–101} The niche is comprised of all the elements including adjacent nonstromal cells, the local extracellular matrix (ECM), and soluble molecules, immediately surrounding the naïve stromal cells.⁶⁷ The microenvironment is thought to influence gene expression and stem cell self-renewal and

commitment to specific lineages.¹⁰² There are several theories surrounding stromal cell lineage determination.¹⁰³ One theory is that stromal cells support the formation of a niche for other cell types.¹⁰⁴ For examples, the cells and ECM of bone marrow stroma form a microenvironment that controls quiescence, self-renewal, and commitment of stem cells and proliferation, maturation, and apoptosis of more mature cells.¹⁰⁵ Stromal cells in the microenvironment control the differentiation and proliferation of progenitor cells through cytokines and other factors.¹⁰⁴ Majumdar et al⁷⁴ found that primary and osteogenic differentiated BMSCs expressed essential hematopoietic cytokines and supported hematopoiesis in long-term culture. These findings support the theory that stromal cells initiate and support the formation of the niche.

A major focus is on signaling factors and intercellular communication in the local environment and interactions between stromal cells and their neighboring ECM.¹⁰⁶ It has been suggested that a highly orchestrated system maintains the stromal cells in their undifferentiated state until specific signals activate their differentiation potential for reparative or regenerative purposes. MSC secrete soluble factors that stimulate proliferation or differentiation and decrease inflammatory and immune responses.^{4,102,107} Some soluble factors secreted by stromal cells are antiapoptotic, angiogenic, and chemoattractants.¹⁰⁸ To inhibit apoptosis, MSC must secrete antiapoptotic bioactive molecules, including vascular endothelial growth factor (VEGF), hepatocyte growth factor (HGF), stanniocalcin-1, and granulocyte-macrophage colony stimulating factor (GM-CSF) among others.¹⁰⁸ Under hypoxic culture conditions, ASCs expressed HGF, VEGF, GM-CSF, transforming growth factor-beta (TGF- β), and basic fibroblast growth factor (bFGF).¹⁰⁹ Secretion of critical proteins minimizes cell death in areas adjacent the site of injury. The MSC secretion of ECM molecules insulin-like growth factor-1, placental growth factor, monocyte chemoattractant protein-1 (MCP-1, CCL2), interleukin-6 (IL-6), bFGF, and VEGF induces angiogenesis.¹⁰⁸ Hung et al¹¹⁰ found MSC conditioned media promotes the *in vitro* formation of capillary-like structures through high levels of IL-6, VEGF, and MCP-1 among others. Cultured MSC produce numerous chemoattractants including CCL2, 3, 4, CXCL2, 5, 10, and 12 that induce the migration of leukocytes to injured tissue.¹⁰⁸

MSC MULTIPOTENTIAL

Stromal cells are characterized by their ability to differentiate into various lineages. Selective differentiation and then maintenance of differentiated adult stromal cells *in vitro* is stimulated by specific growth factors and cytokines.⁶⁷ Osteogenic differentiation can be achieved by the addition of dexamethasone, ascorbic acid, and β -glycerophosphate (DAG) to culture media for 2–3 weeks and confirmed with Alizarin Red staining of calcium in mineralized colonies. Additionally, there is increased expression of

bone-specific genes and proteins associated with the bone phenotype such as alkaline phosphatase and collagen type I (ColI) can be seen.¹¹¹ Jäger et al¹¹² reported that combinations including DAG only, DAG+BMP2, and DAG+BMP2+porcine collagen scaffold induced human BMSC osteoblastic differentiation. Furthermore, they reported that BMSCs cultured with DAG-induced ColI secretion, which was increased by DAG+BMP2. This study gives further insight to MSC osteogenic differentiation and the use of various osteogenic induction agents.

To promote MSC differentiation into the adipogenic lineage, stromal cells can be incubated with insulin, dexamethasone, isobutyl methyl xanthine, and rosiglitazone. Over a 10–14 day culture period, lipid vacuoles accumulate within the cells. The cells express adipogenic specific genes like peroxisome proliferation-activated receptor- γ , leptin, lipoprotein lipase, and fatty acid-binding protein, and stain positive for intracellular lipid accumulation with Oil Red O.^{15,113} Vallee et al¹¹³ demonstrated the adipogenic differentiation potential of ASCs on three-dimensional (3D) substitutes. Specifically, ASCs were induced into adipogenesis and used to generate 3D tissue constructs that had greater surface area than ASCs alone. Results from this study show promise for the potential use of MSC technology to repair soft tissue defects.

Chondrogenic differentiation can be achieved by culturing MSC in high-density pellet cultures in the presence of TGF- β . After 21–28 days, pellets stain positive for sulfated glycosaminoglycan with Safranin O/fast green and have increased mRNA levels of ColII and aggrecan.¹¹⁴ Murdoch et al¹¹⁴ showed that human MSC chondrogenic differentiation can be achieved in micromass pellets as well as in transwell cultures, but transwell cultures had 50% greater proteoglycan content per cell and a more homogenous distribution of Col II. These findings provide essential information regarding MSC chondrogenic differentiation and highlight the potential for chondrogenesis without scaffolds.

Sago et al¹¹⁷ reported that canine ASC can differentiate into early and mature neuronal cells *in vitro*. Investigations have also evaluated the expression of neural markers on BMSCs.^{115–119} Studies of human and murine BMSC show that MSC express neuronal markers without induction and show elevated expression of neuronal markers under specific culture conditions. In 2006, canine BMSC isolated from the iliac crest and induced with dibutyl cAMP and isobutylmethylxanthine constitutively expressed neuron or astrocyte specific proteins *in vitro*.¹¹⁷ In contrast, researchers found that BMSCs differentiated into the neurogenic lineage via chemical induction may resemble neuronal cells, but lack their function. Neuhuber et al¹²⁰ found that when BMSC were chemically induced into neurogenic differentiation, rapid morphologic changes occurred within the cells but neither cell motility nor process extension was observed. Additionally, there was an absence of essential neuronal proteins required for neurogenesis. Electrophysiological analyses of BMSCs differentiated into neurons are necessary before conclusions can be made about their neuronal function. MSC applications for future neurological treatments

are promising; however, more work is needed to validate the capacity of MSCs for neurogenic differentiation.

Use of stromal cells for treatment of neurodegenerative diseases such as Alzheimer's and Parkinson's disease is being investigated.¹²¹ Parkinson's disease is characterized by the loss of dopaminergic and nondopaminergic neurons. *In vitro*, MSC can be induced to differentiate into cells that possess characteristics of dopaminergic neurons including expression of neuron-specific genes.^{122,123} Additionally, MSC survived, expressed hydrolase activity, and promoted functional improvements when transplanted into a MPTP mouse model.¹²⁴ The use of animal models aid in understanding these neurologic disorders so that future research can be applied to people and animals.

ORTHOPEDIC APPLICATIONS OF ADULT STEM/STROMAL CELLS

Use of MSC for orthopedic applications has shown variable efficacy to treat fracture nonunion, ligament and tendon injuries, osteogenesis imperfecta, and spinal cord injuries.^{47,48,125–127} Research is still needed before MSC technology can be clinically applied. In 1999, Horwitz and colleagues used allogeneic bone marrow transplantation to treat children suffering from osteogenesis imperfecta. Patients had increased total mineral bone content, decreased fracture rate, and new dense bone formation 3 months after treatment.⁴⁸ A clinical study in people with acute spinal cord injury treated by intralesional injection of bone marrow mononuclear cell fraction and subcutaneous GM-CSF showed both motor and sensory improvement.¹²⁷ Hiyama et al¹²⁸ found that MSC transplantation was partially effective in inhibiting canine disc regeneration and MSCs may be responsible for maintaining immune privilege in intervertebral discs.

Recently, adult stromal cell-based therapies to treat injuries, growth defects, and degenerative diseases have been introduced.^{125,127,129–131} Adult stromal cells are currently being investigated for treatment of tendon and ligament injuries in several animal models¹³² and osteoarthritis (OA) in dogs.¹³³ Young et al¹³⁴ demonstrated the use of MSC to repair an Achilles tendon injury in a rabbit model. After 12 weeks, regeneration of new tendon-like tissue in the 1 cm defect was evident. Adult stromal cell treatment developed for tendon injuries in horses is slated for human clinical trials.¹³⁵ This treatment has been used in over 1500 horses and resulted in a 50% reduction in the reinjury rate.^{136,137} The results from the equine study stress the importance of animal models in making adult stromal cell application for treatment and regenerative purposes a reality.

TISSUE ENGINEERING

The concept of tissue engineering was pioneered by Bisceglie in 1933 when he discovered that mouse tumor cells survived in a biocompatible polymer membrane implanted

into the abdominal cavity of chick embryos.¹³⁸ Decades after Biscogelie's experiments, Green performed a series of cartilage generation experiments by implanting chondrocytes on bone spicules into nude mice.¹³⁹ The research was largely unsuccessful, but it was a part of the movement that paved the way for later studies in tissue generation. A few years later, Chick et al¹⁴⁰ found that pancreatic β cells cultured on synthetic capillaries and perfused with media, released insulin in response to changes in glucose concentration. In 1985, Fung coined the term tissue engineering based on the traditional definition of tissue as a fundamental level between cells and organs in living organisms; however, it was not until ~1990 that the term was generally accepted.¹⁴¹

Biocompatible scaffold carriers are crucial for stromal cell tissue reconstruction. In general, scaffolds are biological constructs that closely mimic the tissue to be replaced. Stromal cells adhere to the scaffold, replicate, differentiate, and then organize into new tissue. Criteria for an ideal scaffold include: (1) biocompatible and absorbable; (2) supports cell growth; (3) high porosity; (4) possesses chemical factors that promote cell attachment and differentiation; and (5) reproducible. To optimize stromal cell bone repair, a scaffold should possess the characteristics of osteoconduction, osteoinduction, and should promote cellular adherence and recruitment.² Human ASCs produced more osteoid when seeded on hydroxyapatite (HA)/tricalcium phosphate (TCP) scaffolds than cells cultured on collagen/HA-TCP composite.^{142,143} Studies have evaluated the use of HA scaffolds combined with other biologic components such as collagen or calcium phosphate (TCP) for bone regeneration.^{96,144-148} Other types of scaffolds currently in use as stromal cell carriers include: coral, natural bovine bone mineral, polyglycolic acid, collagen, ceramic, poly(lactic-co-glycolic acid), and hydrogel among others.^{144,146,149-153} In 2008, Macchiarini et al¹⁵⁴ reported that a deproteinized human trachea colonized with epithelial cells and MSC-derived chondrocytes was successfully implanted to replace the left main bronchus of a patient with end-stage bronchomalacia.

Numerous canine studies have demonstrated the importance of stromal cell/scaffold interactions. Jafarian et al¹⁴⁴ compared BMSCs on HA/TCP and NBM carriers for alveolar bone regeneration in a canine mandibular defect model and concluded that HA/TCP enriched with BMSC provided better conditions for bone regeneration compared with the NBM. Cui et al¹⁴⁹ demonstrated that an engineered bone composed of autologous ASCs on natural coral scaffold promoted repair of critical sized cranial defects in canine models. These studies highlight the fact that ASC osteogenic capacity is significantly influenced by the carrier scaffold. The use of MSC on biologic scaffold carriers is a promising therapeutic entity for tissue regeneration. Optimization and customization of stromal cell-scaffold interactions are critical to derive the most benefit from clinical application.

Tissue engineering has not only been investigated for the repair of bone defects, but also for regeneration of ad-

ipose tissue and cartilage. Tissue engineering strategies have been proposed for breast tissue reconstruction and other soft tissue defects with methods encompassing stromal cells, growth factors, and/or scaffolds to generate adipose tissue.¹⁵⁵ Cartilage has poor regenerative capacity, so MSC technology provides promising treatment options. Wakitani et al¹⁵⁶ reported successful repair of caprine chondral defects using MSC in a type I collagen gel. Later, he applied his work clinically to treat human patients with full-thickness articular cartilage defects and knee OA.^{157,158} Twelve patients treated with BMSC injections in conjunction with a periosteal grafts for cartilage defects on the medial femoral condyle had better arthroscopic and histologic outcomes. These studies show that MSC technology has potential for regenerative and reparative purpose, although more work is needed before clinical application.

THERAPEUTIC USES

Regenerative medicine is a rapidly growing specialty. Recently, Daar and Greenwood¹⁵⁹ defined regenerative medicine as the field of research focused on the repair, replacement or regeneration of cells, tissues, and organs. The primary goal is to augment the body's natural ability to replace tissue damaged or destroyed by injury or disease. Stromal cell research has proven invaluable in the development of cellular therapy because of enormous contributions to knowledge of the mechanisms of cellular proliferation and differentiation.¹⁶⁰ Many current treatments may be augmented or replaced by regenerative medicine, and a number of therapies are currently under investigation.

In addition to orthopedics, other medical disciplines will benefit from stromal cell technology. Current investigations include stem cell treatment for myocardial infarctions.¹³⁰ Orlic et al¹⁶¹ reported that bone marrow cells injected into the myocardium resulted in myocardial regeneration consisting of cardiomyocytes and vascular elements. Mangi et al¹⁶² reported that murine BMSCs injected into damaged myocardium over expressed Akt, a prosurvival gene. The Akt-MSC inhibited ventricular remodeling and restored cardiac function 2 weeks after myocardial infarction. Another study by the same investigators showed that cardiac function was restored within 72 hours after injection of the rat Akt-BMSCs.¹⁶³ It is believed that this effect occurred by paracrine actions of the cells and demonstrated that Akt-MSCs release factors that exerted beneficial effects on isolated cardiomyocytes *in vitro* when exposed to hypoxia. Bi et al¹⁶⁴ investigated the endocrine actions of murine BMSC and found that they reduced the severity of cisplatin induced acute renal failure whether administered by intraperitoneal injection or intravenous infusion. They concluded that BMSC secrete specific factors that protect the kidney from toxic injury. Stromal cells have also been used to treat liver disease. Implantation of *in vitro* expanded murine MSC significantly reduced

experimentally induced chronic liver injury and fibrosis.¹⁶⁵ Continued research is underway to incorporate stromal cells into standard treatments.

CONCLUSIONS

There have been great strides in stromal cell technology to treat a variety of diseases and injuries since early studies laid the foundation for stromal cell therapies and tissue regeneration. Standardization of MSC isolation, characterization, and differentiation is necessary to derive the greatest benefits from them. Biocompatible scaffolds to facilitate cell proliferation, differentiation, and tissue development are also critical for their use. Investigations are underway to identify scaffold properties that will optimize stromal cell activity. Additional investigations and clinical trials to establish safety and efficacy are also necessary before routine clinical application. Stromal cell technology is a rapidly emerging discipline that has significant potential to shift the paradigm surrounding restoration of tissue lost to trauma or disease.

REFERENCES

- Weissman IL: Translating stem and progenitor cell biology to the clinic: barriers and opportunities. *Science* 2000;287:1442–1446
- Caplan AI: Review: mesenchymal stem cells: cell-based reconstructive therapy in orthopedics. *Tissue Eng* 2005;11:1198–1211
- Caplan AI: Adult mesenchymal stem cells for tissue engineering versus regenerative medicine. *J Cell Physiol* 2007;213:341–347
- Chen Y, Shao JZ, Xiang LX, et al: Mesenchymal stem cells: a promising candidate in regenerative medicine. *Int J Biochem Cell Biol* 2008;40:815–820
- Horwitz EM, Le Blanc K, Dominici M, et al: Clarification of the nomenclature for MSC: The International Society for Cellular Therapy position statement. *Cytotherapy* 2005;7:393–395
- Alison MR, Poulson R, Forbes S, et al: An introduction to stem cells. *J Pathol* 2002;197:419–423
- Takahashi K, Tanabe K, Ohnuki M, et al: Induction of pluripotent stem cells from adult human fibroblasts by defined factors. *Cell* 2007;131:861–872
- Cutler C, Antin JH: Peripheral blood stem cells for allogeneic transplantation: a review. *Stem Cells* 2001;19:108–117
- da Silva Meirelles L, Chagastelles PC, Nardi NB: Mesenchymal stem cells reside in virtually all post-natal organs and tissues. *J Cell Sci* 2006;119:2204–2213
- Eyden BP, Ponting J, Davies H, et al: Defining the myofibroblast: normal tissues, with special reference to the stromal cells of Wharton's jelly in human umbilical cord. *J Submicrosc Cytol Pathol* 1994;26:347–355
- Hu Y, Liao L, Wang Q, et al: Isolation and identification of mesenchymal stem cells from human fetal pancreas. *J Lab Clin Med* 2003;141:342–349
- Jiang Y, Vaessen B, Lenvik T, et al: Multipotent progenitor cells can be isolated from postnatal murine bone marrow, muscle, and brain. *Exp Hematol* 2002;30:896–904
- Lee OK, Kuo TK, Chen WM, et al: Isolation of multipotent mesenchymal stem cells from umbilical cord blood. *Blood* 2004;103:1669–1675
- Mihu CM, Mihu D, Costin N, et al: Isolation and characterization of stem cells from the placenta and the umbilical cord. *Rom J Morphol Embryol* 2008;49:441–446
- Pittenger MF, Mackay AM, Beck SC, et al: Multilineage potential of adult human mesenchymal stem cells. *Science* 1999;284:143–147
- Wakitani S, Saito T, Caplan AI: Myogenic cells derived from rat bone marrow mesenchymal stem cells exposed to 5-azacytidine. *Muscle Nerve* 1995;18:1417–1426
- Sago K, Tamahara S, Tomihari M, et al: In vitro differentiation of canine celiac adipose tissue-derived stromal cells into neuronal cells. *J Vet Med Sci* 2008;70:353–357
- Scholer H: *The potential of stem cells. An inventory.* Aldershot, Ashgate Publishing Ltd, 2007
- Hanna J, Wernig M, Markoulaki S, et al: Treatment of sickle cell anemia mouse model with iPS cells generated from autologous skin. *Science* 2007;318:1920–1923
- Carr AJ, Vugler AA, Hikita ST, et al: Protective effects of human iPS-derived retinal pigment epithelium cell transplantation in the retinal dystrophic rat. *PLoS One* 2009;4:e8152
- Dominici M, Le Blanc K, Mueller I, et al: Minimal criteria for defining multipotent mesenchymal stromal cells. The International Society for Cellular Therapy position statement. *Cytotherapy* 2006;8:315–317
- Prockop DJ: Marrow stromal cells as stem cells for nonhematopoietic tissues. *Science* 1997;276:71–74
- Friedenstein AJ, Petrakova KV, Kurolesova AI, et al: Heterotopic of bone marrow. Analysis of precursor cells for osteogenic and hematopoietic tissues. *Transplantation* 1968;6:230–247
- Friedenstein AJ, Chailakhjan RK, Lalykina KS: The development of fibroblast colonies in monolayer cultures of guinea-pig bone marrow and spleen cells. *Cell Tissue Kinet* 1970;3:393–403
- Friedenstein AJ: Precursor cells of mechanocytes. *Int Rev Cytol* 1976;47:327–359
- Owen ME: Lineage of osteogenic cells and their relationship to the stromal system, in Peck WJ (ed): *Bone and mineral* (ed 3), Vol. 3. Amsterdam, Elsevier, 1985, pp 1–25
- Owen M, Friedenstein AJ: Stromal stem cells: marrow-derived osteogenic precursors. *Ciba Found Symp* 1988;136:42–60
- Lalykina KS, Friedenshtein A: Induction of thymus cells to form bone. *Biull Eksp Biol Med* 1972;73:88–90
- Urist MR: Bone: formation by autoinduction. *Science* 1965;150:893–899
- Urist MR, DeLange RJ, Finerman GA: Bone cell differentiation and growth factors. *Science* 1983;220:680–686
- Reddi AH, Huggins C: Biochemical sequences in the transformation of normal fibroblasts in adolescent rats. *Proc Natl Acad Sci U S A* 1972;69:1601–1605

32. Caplan AI: Effects of the nicotinamide-sensitive teratogen 3-acetylpyridine on chick limb cells in culture. *Exp Cell Res* 1970;62:341–355
33. Caplan AI: The molecular control of muscle and cartilage development. *Proceedings, 39th Annual Symposium of the Society for Developmental Biology*, New York, 1981
34. Caplan AI, Koutropas S: The control of muscle and cartilage development in the chick limb: the role of differential vascularization. *J Embryol Exp Morphol* 1973;29:571–583
35. Caplan AI, Marshall R, Urist MD: Bioactive factors in bone: Kerrville, Texas. *Connect Tissue Res* 1989;23:103–106
36. Caplan AI: Cartilage begets bone versus endochondral myelopoiesis. *Clin Orthop Relat Res* 1990;261: 257–267
37. Lucas PA, Syftestad GT, Caplan AI: Partial isolation and characterization of a chemotactic factor from adult bovine bone for mesenchymal cells. *Bone* 1986;7:365–371
38. Lucas PA, Syftestad GT, Caplan AI: A water-soluble fraction from adult bone stimulates the differentiation of cartilage in explants of embryonic muscle. *Differentiation* 1988;37:47–52
39. Syftestad GT, Caplan AI: A fraction from extracts of demineralized adult bone stimulates the conversion of mesenchymal cells into chondrocytes. *Dev Biol* 1984;104:348–356
40. Syftestad GT, Lucas PA, Caplan AI: The in vitro chondrogenic response of limb-bud mesenchyme to a water-soluble fraction prepared from demineralized bone matrix. *Differentiation* 1985;29:230–237
41. Syftestad GT, Triffitt JT, Urist MR, et al: An osteo-inductive bone matrix extract stimulates the in vitro conversion of mesenchyme into chondrocytes. *Calcif Tissue Int* 1984;36:625–627
42. Connolly JF, Guse R, Tiedeman J, et al: Autologous marrow injection as a substitute for operative grafting of tibial nonunions. *Clin Orthop Relat Res* 1991;266: 259–270
43. Gimble JM: The function of adipocytes in the bone marrow stroma. *New Biol* 1990;2:304–312
44. Caplan AI: Mesenchymal stem cells. *J Orthop Res* 1991;9:641–650
45. Pereira RF, Halford KW, O'Hara MD, et al: Cultured adherent cells from marrow can serve as long-lasting precursor cells for bone, cartilage, and lung in irradiated mice. *Proc Natl Acad Sci U S A* 1995;92:4857–4861
46. Pereira RF, O'Hara MD, Laptov AV, et al: Marrow stromal cells as a source of progenitor cells for nonhematopoietic tissues in transgenic mice with a phenotype of osteogenesis imperfecta. *Proc Natl Acad Sci U S A* 1998;95:1142–1147
47. Horwitz EM, Gordon PL, Koo WK, et al: Isolated allogeneic bone marrow-derived mesenchymal cells engraft and stimulate growth in children with osteogenesis imperfecta: implications for cell therapy of bone. *Proc Natl Acad Sci U S A* 2002;99:8932–8937
48. Horwitz EM, Prockop DJ, Fitzpatrick LA, et al: Transplantability and therapeutic effects of bone marrow-derived mesenchymal cells in children with osteogenesis imperfecta. *Nat Med* 1999;5:309–313
49. Keating A, Berkahn L, Filshie R: A phase I study of the transplantation of genetically marked autologous bone marrow stromal cells. *Hum Gene Ther* 1998;9:591–600
50. Horwitz EM, Keating A: Nonhematopoietic mesenchymal stem cells: what are they? *Cytotherapy* 2000;2:387–388
51. Gronthos S, Zannettino AC, Hay SJ, et al: Molecular and cellular characterisation of highly purified stromal stem cells derived from human bone marrow. *J Cell Sci* 2003;116:1827–1835
52. Lazarus HM, Haynesworth SE, Gerson SL, et al: Ex vivo expansion and subsequent infusion of human bone marrow-derived stromal progenitor cells (mesenchymal progenitor cells): implications for therapeutic use. *Bone Marrow Transplant* 1995;16:557–564
53. D'Ippolito G, Diabira S, Howard GA, et al: Marrow-isolated adult multilineage inducible (MIAMI) cells, a unique population of postnatal young and old human cells with extensive expansion and differentiation potential. *J Cell Sci* 2004;117:2971–2981
54. Gimble JM, Guilak F: Differentiation potential of adipose derived adult stem (ADAS) cells. *Curr Top Dev Biol* 2003;58:137–160
55. Conget PA, Minguell JJ: Phenotypical and functional properties of human bone marrow mesenchymal progenitor cells. *J Cell Physiol* 1999;181:67–73
56. Gimble JM, Katz AJ, Bunnell BA: Adipose-derived stem cells for regenerative medicine. *Circ Res* 2007;100:1249–1260
57. Jaiswal N, Haynesworth SE, Caplan AI, et al: Osteogenic differentiation of purified, culture-expanded human mesenchymal stem cells in vitro. *J Cell Biochem* 1997;64:295–312
58. Tapp H, Hanley EN Jr, Patt JC, et al: Adipose-derived stem cells: characterization and current application in orthopaedic tissue repair. *Exp Biol Med (Maywood)* 2009;234:1–9
59. Castro-Malaspina H, Gay RE, Resnick G, et al: Characterization of human bone marrow fibroblast colony-forming cells (CFU-F) and their progeny. *Blood* 1980;56:289–301
60. Wang QR, Yan ZJ, Wolf NS: Dissecting the hematopoietic microenvironment VI. The effects of several growth factors on the in vitro growth of murine bone marrow CFU-F. *Exp Hematol* 1990;18:341–347
61. Kuo CK, Tuan RS: Mechanoactive tenogenic differentiation of human mesenchymal stem cells. *Tissue Eng Part A* 2008;14:1615–1627
62. The Cluster of Differentiation (CD). *Antigens* (ed 7). New York, McGraw-Hill, 2005
63. Dicker A, Le Blanc K, Astrom G, et al: Functional studies of mesenchymal stem cells derived from adult human adipose tissue. *Exp Cell Res* 2005;308:283–290
64. Festy F, Hoareau L, Bes-Houtmann S, et al: Surface protein expression between human adipose tissue-derived stromal cells and mature adipocytes. *Histochem Cell Biol* 2005;124:113–121
65. Gronthos S, Franklin DM, Leddy HA, et al: Surface protein characterization of human adipose tissue-derived stromal cells. *J Cell Physiol* 2001;189:54–63
66. Haniffa MA, Wang XN, Holtick U, et al: Adult human fibroblasts are potent immunoregulatory cells and functionally equivalent to mesenchymal stem cells. *J Immunol* 2007;179:1595–1604

67. Kolf CM, Cho E, Tuan RS: Mesenchymal stromal cells. Biology of adult mesenchymal stem cells: regulation of niche, self-renewal and differentiation. *Arthritis Res Ther* 2007;9:204–213
68. Mitchell JB, McIntosh K, Zvonic S, et al: Immunophenotype of human adipose-derived cells: temporal changes in stromal-associated and stem cell-associated markers. *Stem Cells* 2006;24:376–385
69. Oedayrajsingh-Varma MJ, van Ham SM, Knippenberg M, et al: Adipose tissue-derived mesenchymal stem cell yield and growth characteristics are affected by the tissue-harvesting procedure. *Cytotherapy* 2006;8:166–177
70. Varma MJ, Breuls RG, Schouten TE, et al: Phenotypical and functional characterization of freshly isolated adipose tissue-derived stem cells. *Stem Cells Dev* 2007;16:91–104
71. Wagner W, Wein F, Seckinger A, et al: Comparative characteristics of mesenchymal stem cells from human bone marrow, adipose tissue, and umbilical cord blood. *Exp Hematol* 2005;33:1402–1416
72. Yanez R, Lamana ML, Garcia-Castro J, et al: Adipose tissue-derived mesenchymal stem cells have in vivo immunosuppressive properties applicable for the control of the graft-versus-host disease. *Stem Cells* 2006;24:2582–2591
73. Huss R: Perspectives on the morphology and biology of CD34-negative stem cells. *J Hematother Stem Cell Res* 2000;9:783–793
74. Majumdar MK, Thiede MA, Haynesworth SE, et al: Human marrow-derived mesenchymal stem cells (MSCs) express hematopoietic cytokines and support long-term hematopoiesis when differentiated toward stromal and osteogenic lineages. *J Hematother Stem Cell Res* 2000;9:841–848
75. Zuk PA, Zhu M, Ashjian P, et al: Human adipose tissue is a source of multipotent stem cells. *Mol Biol Cell* 2002;13:4279–4295
76. Crisan M, Yap S, Casteilla L, et al: A perivascular origin for mesenchymal stem cells in multiple human organs. *Cell Stem Cell* 2008;3:301–313
77. Sacchetti B, Funari A, Michienzi S, et al: Self-renewing osteoprogenitors in bone marrow sinusoids can organize a hematopoietic microenvironment. *Cell* 2007;131:324–336
78. Zannettino AC, Paton S, Arthur A, et al: Multipotential human adipose-derived stromal stem cells exhibit a perivascular phenotype in vitro and in vivo. *J Cell Physiol* 2008;214:413–421
79. Niku M, Ilmonen L, Pessa-Morikawa T, et al: Limited contribution of circulating cells to the development and maintenance of nonhematopoietic bovine tissues. *Stem Cells* 2004;22:12–20
80. Kadiyala S, Young RG, Thiede MA, et al: Culture expanded canine mesenchymal stem cells possess osteochondrogenic potential in vivo and in vitro. *Cell Transplant* 1997;6:125–134
81. Neupane M, Chang CC, Kiupel M, et al: Isolation and characterization of canine adipose-derived mesenchymal stem cells. *Tissue Eng Part A* 2008;14:1007–1015
82. Fortier LA, Nixon AJ, Williams J, et al: Isolation and chondrocytic differentiation of equine bone marrow-derived mesenchymal stem cells. *Am J Vet Res* 1998;59:1182–1187
83. Martin DR, Cox NR, Hathcock TL, et al: Isolation and characterization of multipotential mesenchymal stem cells from feline bone marrow. *Exp Hematol* 2002;30:879–886
84. Izadpanah R, Trygg C, Patel B, et al: Biologic properties of mesenchymal stem cells derived from bone marrow and adipose tissue. *J Cell Biochem* 2006;99:1285–1297
85. Meirelles Lda S, Nardi NB: Murine marrow-derived mesenchymal stem cell: isolation, in vitro expansion, and characterization. *Br J Haematol* 2003;123:702–711
86. Harting M, Jimenez F, Pati S, et al: Immunophenotype characterization of rat mesenchymal stromal cells. *Cytotherapy* 2008;10:243–253
87. Vidal MA, Kilroy GE, Johnson JR, et al: Cell growth characteristics and differentiation frequency of adherent equine bone marrow-derived mesenchymal stromal cells: adipogenic and osteogenic capacity. *Vet Surg* 2006;35:601–610
88. Vidal MA, Kilroy GE, Lopez MJ, et al: Characterization of equine adipose tissue-derived stromal cells: adipogenic and osteogenic capacity and comparison with bone marrow-derived mesenchymal stromal cells. *Vet Surg* 2007;36:613–622
89. Cui L, Yin S, Liu W, et al: Expanded adipose-derived stem cells suppress mixed lymphocyte reaction by secretion of prostaglandin E2. *Tissue Eng* 2007;13:1185–1195
90. Hoogduijn MJ, Crop MJ, Peeters AM, et al: Human heart, spleen, and perirenal fat-derived mesenchymal stem cells have immunomodulatory capacities. *Stem Cells Dev* 2007;16:597–604
91. McIntosh K, Zvonic S, Garrett S, et al: The immunogenicity of human adipose-derived cells: temporal changes in vitro. *Stem Cells* 2006;24:1246–1253
92. Niemeyer P, Kornacker M, Mehlhorn A, et al: Comparison of immunological properties of bone marrow stromal cells and adipose tissue-derived stem cells before and after osteogenic differentiation in vitro. *Tissue Eng* 2007;13:111–121
93. Puissant B, Barreau C, Bourin P, et al: Immunomodulatory effect of human adipose tissue-derived adult stem cells: comparison with bone marrow mesenchymal stem cells. *Br J Haematol* 2005;129:118–129
94. Le Blanc K, Tammik C, Rosendahl K, et al: HLA expression and immunologic properties of differentiated and undifferentiated mesenchymal stem cells. *Exp Hematol* 2003;31:890–896
95. Le Blanc K, Tammik L, Sundberg B, et al: Mesenchymal stem cells inhibit and stimulate mixed lymphocyte cultures and mitogenic responses independently of the major histocompatibility complex. *Scand J Immunol* 2003;57:11–20
96. Lopez MJ, McIntosh KR, Spencer ND, et al: Acceleration of spinal fusion using syngeneic and allogeneic adult adipose derived stem cells in a rat model. *J Orthop Res* 2009;27:366–373
97. McIntosh KR, Lopez MJ, Borneman JN, et al: Immunogenicity of allogeneic adipose-derived stem cells in a rat spinal fusion model. *Tissue Eng Part A* 2009;15:2677–2686
98. Kincade PW, Lee G, Pietrangeli CE, et al: Cells and molecules that regulate B lymphopoiesis in bone marrow. *Annu Rev Immunol* 1989;7:111–143

99. Weiss L, Sakai H: The hematopoietic stroma. *Am J Anat* 1984;170:447–463
100. Whitlock CA, Tidmarsh GF, Muller-Sieburg C, et al: Bone marrow stromal cell lines with lymphopoietic activity express high levels of a pre-B neoplasia-associated molecule. *Cell* 1987;48:1009–1021
101. Zhang J, Li L: Stem cell niche: microenvironment and beyond. *J Biol Chem* 2008;283:9499–9503
102. Bajada S, Mazakova I, Richardson JB, et al: Updates on stem cells and their applications in regenerative medicine. *J Tissue Eng Regen Med* 2008;2:169–183
103. Kallis YN, Alison MR, Forbes SJ: Bone marrow stem cells and liver disease. *Gut* 2007;56:716–724
104. Nardi NB, Alfonso ZZ: The hematopoietic stroma. *Braz J Med Biol Res* 1999;32:601–609
105. Hubin F, Humblet C, Belaid Z, et al: Murine bone marrow stromal cells sustain in vivo the survival of hematopoietic stem cells and the granulopoietic differentiation of more mature progenitors. *Stem Cells* 2005;23:1626–1633
106. Cai J, Weiss ML, Rao MS: In search of “stemness”. *Exp Hematol* 2004;32:585–598
107. Baddoo M, Hill K, Wilkinson R, et al: Characterization of mesenchymal stem cells isolated from murine bone marrow by negative selection. *J Cell Biochem* 2003;89:1235–1249
108. Meirelles Lda S, Fontes AM, Covas DT, et al: Mechanisms involved in the therapeutic properties of mesenchymal stem cells. *Cytokine Growth Factor Rev* 2009;20:419–427
109. Rehman J, Traktuev D, Li J, et al: Secretion of angiogenic and antiapoptotic factors by human adipose stromal cells. *Circulation* 2004;109:1292–1298
110. Hung SC, Pochampally RR, Chen SC, et al: Angiogenic effects of human multipotent stromal cell conditioned medium activate the PI3K-Akt pathway in hypoxic endothelial cells to inhibit apoptosis, increase survival, and stimulate angiogenesis. *Stem Cells* 2007;25:2363–2370
111. Halvorsen YD, Franklin D, Bond AL, et al: Extracellular matrix mineralization and osteoblast gene expression by human adipose tissue-derived stromal cells. *Tissue Eng* 2001;7:729–741
112. Jäger M, Fischer J, Dohrn W, et al: Dexamethasone modulates BMP-2 effects on mesenchymal stem cells in vitro. *J Orthop Res* 2008;26:1440–1448
113. Vallee M, Cote JF, Fradette J: Adipose-tissue engineering: taking advantage of the properties of human adipose-derived stem/stromal cells. *Pathol Biol (Paris)* 2009;57:309–317
114. Murdoch AD, Grady LM, Ablett MP, et al: Chondrogenic differentiation of human bone marrow stem cells in transwell cultures: generation of scaffold-free cartilage. *Stem Cells* 2007;25:2786–2796
115. Deng J, Petersen BE, Steindler DA, et al: Mesenchymal stem cells spontaneously express neural proteins in culture and are neurogenic after transplantation. *Stem Cells* 2006;24:1054–1064
116. Deng W, Obrocka M, Fischer I, et al: In vitro differentiation of human marrow stromal cells into early progenitors of neural cells by conditions that increase intracellular cyclic AMP. *Biochem Biophys Res Commun* 2001;282:148–152
117. Kamishina H, Deng J, Oji T, et al: Expression of neural markers on bone marrow-derived canine mesenchymal stem cells. *Am J Vet Res* 2006;67:1921–1928
118. Sanchez-Ramos J, Song S, Cardozo-Pelaez F, et al: Adult bone marrow stromal cells differentiate into neural cells in vitro. *Exp Neurol* 2000;164:247–256
119. Woodbury D, Schwarz EJ, Prockop DJ, et al: Adult rat and human bone marrow stromal cells differentiate into neurons. *J Neurosci Res* 2000;61:364–370
120. Neuhuber B, Gallo G, Howard L, et al: Reevaluation of in vitro differentiation protocols for bone marrow stromal cells: disruption of actin cytoskeleton induces rapid morphological changes and mimics neuronal phenotype. *J Neurosci Res* 2004;77:192–204
121. Safford KM, Rice HE: Stem cell therapy for neurologic disorders: therapeutic potential of adipose-derived stem cells. *Curr Drug Targets* 2005;6:57–62
122. Guo L, Yin F, Meng HQ, et al: Differentiation of mesenchymal stem cells into dopaminergic neuron-like cells in vitro. *Biomed Environ Sci* 2005;18:36–42
123. Kramer BC, Woodbury D, Black IB: Adult rat bone marrow stromal cells express genes associated with dopamine neurons. *Biochem Biophys Res Commun* 2006;343:1045–1052
124. Li Y, Chen J, Wang L, et al: Intracerebral transplantation of bone marrow stromal cells in a 1-methyl-4-phenyl-1,2,3,6-tetrahydropyridine mouse model of Parkinson's disease. *Neurosci Lett* 2001;316:67–70
125. Chong AK, Ang AD, Goh JC, et al: Bone marrow-derived mesenchymal stem cells influence early tendon-healing in a rabbit achilles tendon model. *J Bone Joint Surg Am* 2007;89:74–81
126. Goel A, Sangwan SS, Siwach RC, et al: Percutaneous bone marrow grafting for the treatment of tibial non-union. *Injury* 2005;36:203–206
127. Park HC, Shim YS, Ha Y, et al: Treatment of complete spinal cord injury patients by autologous bone marrow cell transplantation and administration of granulocyte-macrophage colony stimulating factor. *Tissue Eng* 2005;11:913–922
128. Hiyama A, Mochida J, Iwashina T, et al: Transplantation of mesenchymal stem cells in a canine disc degeneration model. *J Orthop Res* 2008;26:589–600
129. Atala A, Bauer SB, Soker S, et al: Tissue-engineered autologous bladders for patients needing cystoplasty. *Lancet* 2006;367:1241–1246
130. Janssens S, Dubois C, Bogaert J, et al: Autologous bone marrow-derived stem-cell transfer in patients with ST-segment elevation myocardial infarction: double-blind, randomised controlled trial. *Lancet* 2006;367:113–121
131. Murphy JM, Fink DJ, Hunziker EB, et al: Stem cell therapy in a caprine model of osteoarthritis. *Arthritis Rheum* 2003;48:3464–3474
132. Richardson LE, Dudhia J, Clegg PD, et al: Stem cells in veterinary medicine—attempts at regenerating equine tendon after injury. *Trends Biotechnol* 2007;25:409–416

133. Black LL, Gaynor J, Gahring D, et al: Effect of adipose-derived mesenchymal stem and regenerative cells on lameness in dogs with chronic osteoarthritis of the coxofemoral joints: a randomized, double-blinded, multicenter, controlled trial. *Vet Ther* 2007;8:272–284
134. Young RG, Butler DL, Weber W, et al: Use of mesenchymal stem cells in a collagen matrix for Achilles tendon repair. *J Orthop Res* 1998;16:406–413
135. Singer E: How injured racehorses might save your knees. Available at http://www.jannolta.com/collaboration_with_the_school_of_veterinary_medicines_center_for_equine_health, 2009
136. Dahlgren L: Use of adipose derived stem cells in tendon and ligament injuries. *Proceedings, American College of Veterinary Surgery Symposium Equine Small Animal Proceedings*, 2006
137. Harman R, Cowles B, Orava C: A retrospective review of 62 cases of suspensory ligament injury in sport horses treated with adipose-derived stem and regenerative cell therapy. *Proceedings, of the Veterinary Orthopedic Society*, 2006
138. Kim KM, Evans GR: Tissue engineering: The future of stem cells, in Ashammakhi N, Reis RL (eds): *Topics in tissue engineering*, Vol 2 2005, pp 1–21
139. Green WT Jr: Articular cartilage repair. Behavior of rabbit chondrocytes during tissue culture and subsequent allografting. *Clin Orthop Relat Res* 1977; 124: 237–250
140. Chick WL, Like AA, Lauris V: Beta cell culture on synthetic capillaries: an artificial endocrine pancreas. *Science* 1975;187:847–849
141. Viola J, Lal B, Grad O: *The emergence of tissue engineering as a research field*. Arlington, National Science Foundation, 2004
142. Hicok KC, Du Laney TV, Zhou YS, et al: Human adipose-derived adult stem cells produce osteoid in vivo. *Tissue Eng* 2004;10:371–380
143. Justesen J, Pedersen SB, Stenderup K, et al: Subcutaneous adipocytes can differentiate into bone-forming cells in vitro and in vivo. *Tissue Eng* 2004;10:381–391
144. Jafarian M, Eslaminejad MB, Khojasteh A, et al: Marrow-derived mesenchymal stem cells-directed bone regeneration in the dog mandible: a comparison between biphasic calcium phosphate and natural bone mineral. *Oral Surg Oral Med Oral Pathol Oral Radiol Endod* 2008;105:e14–24
145. Jang BJ, Byeon YE, Lim JH, et al: Implantation of canine umbilical cord blood-derived mesenchymal stem cells mixed with beta-tricalcium phosphate enhances osteogenesis in bone defect model dogs. *J Vet Sci* 2008;9:387–393
146. Teixeira S, Ferraz MP, Monteiro FJ: Biocompatibility of highly macroporous ceramic scaffolds: cell adhesion and morphology studies. *J Mater Sci Mater Med* 2008;19:855–859
147. Wahl DA, Czernuszka JT: Collagen-hydroxyapatite composites for hard tissue repair. *Eur Cell Mater* 2006;11:43–56
148. Wahl DA, Sachlos E, Liu C, et al: Controlling the processing of collagen-hydroxyapatite scaffolds for bone tissue engineering. *J Mater Sci Mater Med* 2007;18:201–209
149. Cui L, Liu B, Liu G, et al: Repair of cranial bone defects with adipose derived stem cells and coral scaffold in a canine model. *Biomaterials* 2007;28:5477–5486
150. Drury JL, Mooney DJ: Hydrogels for tissue engineering: scaffold design variables and applications. *Biomaterials* 2003;24:4337–4351
151. Glowacki J, Mizuno S: Collagen scaffolds for tissue engineering. *Biopolymers* 2008;89:338–344
152. Kim BS, Mooney DJ: Scaffolds for engineering smooth muscle under cyclic mechanical strain conditions. *J Biomech Eng* 2000;122:210–215
153. Pattison MA, Wurster S, Webster TJ, et al: Three-dimensional, nano-structured PLGA scaffolds for bladder tissue replacement applications. *Biomaterials* 2005;26:2491–2500
154. Macchiarini P, Jungebluth P, Go T, et al: Clinical transplantation of a tissue-engineered airway. *Lancet* 2008;372:2023–2030
155. Patrick CW Jr: Adipose tissue engineering: the future of breast and soft tissue reconstruction following tumor resection. *Semin Surg Oncol* 2000;19:302–311
156. Wakitani S, Goto T, Pineda SJ, et al: Mesenchymal cell-based repair of large, full-thickness defects of articular cartilage. *J Bone Joint Surg Am* 1994;76:579–592
157. Wakitani S, Imoto K, Yamamoto T, et al: Human autologous culture expanded bone marrow mesenchymal cell transplantation for repair of cartilage defects in osteoarthritic knees. *Osteoarthritis Cartilage* 2002;10:199–206
158. Wakitani S, Mitsuoka T, Nakamura N, et al: Autologous bone marrow stromal cell transplantation for repair of full-thickness articular cartilage defects in human patellae: two case reports. *Cell Transplant* 2004;13:595–600
159. Daar AS, Greenwood HL: A proposed definition of regenerative medicine. *J Tissue Eng Regen Med* 2007;1:179–184
160. Branski LK, Gauglitz GG, Herndon DN, et al: A review of gene and stem cell therapy in cutaneous wound healing. *Burns* 2009;35:171–180
161. Orlic D, Kajstura J, Chimenti S, et al: Bone marrow cells regenerate infarcted myocardium. *Nature* 2001;410:701–705
162. Mangi AA, Noiseux N, Kong D, et al: Mesenchymal stem cells modified with Akt prevent remodeling and restore performance of infarcted hearts. *Nat Med* 2003;9:1195–1201
163. Gnecci M, He H, Noiseux N, et al: Evidence supporting paracrine hypothesis for Akt-modified mesenchymal stem cell-mediated cardiac protection and functional improvement. *FASEB J* 2006;20:661–669
164. Bi B, Schmitt R, Israilova M, et al: Stromal cells protect against acute tubular injury via an endocrine effect. *J Am Soc Nephrol* 2007;18:2486–2496
165. Higashiyama R, Inagaki Y, Hong YY, et al: Bone marrow-derived cells express matrix metalloproteinases and contribute to regression of liver fibrosis in mice. *Hepatology* 2007;45:213–222